



White Horse Key Cruise / Picnic - July 2, 2010



Time: 1100 - 1400

Bring your own everything! Bring a friend, bring family, bring food & beverages, etc.

Let us know if you need a ride or can take someone in your boat.



Contacts:

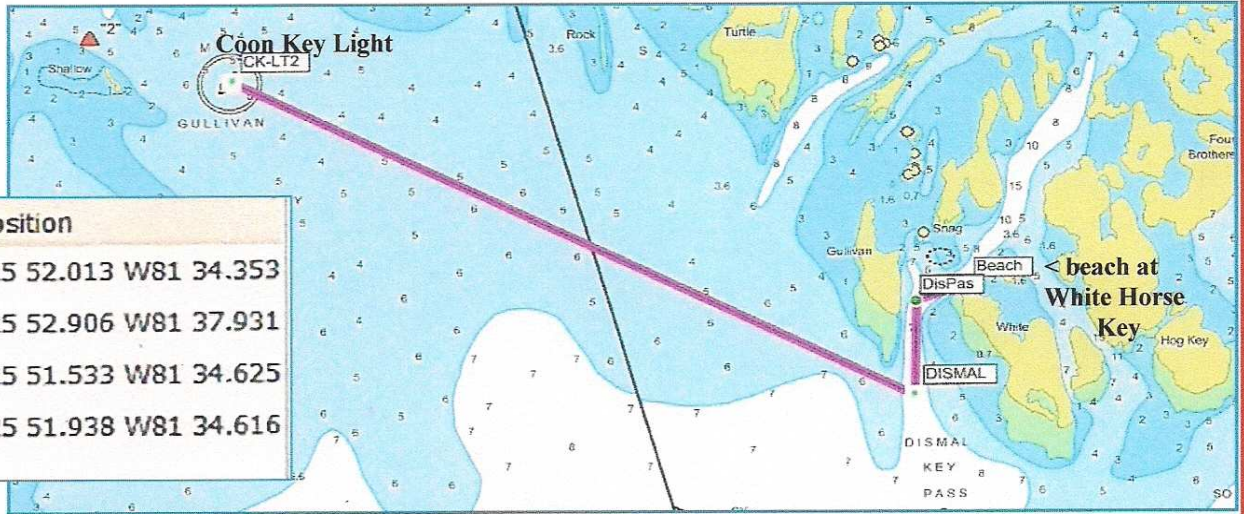
Carol & Bernie Hill

Phone: 298-3613

E-mail:

templar_39@yahoo.com

Note: not for navigation ... area subject to change!



| Name | Position |
|--------|-----------------------|
| Beach | N25 52.013 W81 34.353 |
| CK-LT2 | N25 52.906 W81 37.931 |
| DISMAL | N25 51.533 W81 34.625 |
| DisPas | N25 51.938 W81 34.616 |

Keewaydin Island Cruise / Picnic - August 6, 2010

WELCOME MISPS & MSC MEMBERS*!

Again bring your own everything ... beverages, food, sunscreen, etc.

Let us know if you need a ride or you can take someone in your boat. Give us a call >

Contact:

Andy B. @ 642-5721 or

Bryan Mordecai @

642-1006

* Marco Island Squadron & Marco Fishing Club

DIRECTIONS:

From the "C" marker at the mouth of the Marco River, follow the markers with increasing numbers to the NNE keeping the red markers (even numbered) to starboard. At marker red "2A", where the channel splits, follow the channel to the left (towards Naples) to green "33" (about 3.6 nm). Keeping green "33" on your port side, swing around the marker toward the south. After about 1 nm on a heading of about 160° T, you should see boats with the MISPS burgee. That's Us ... ! If you are challenged by sentries, the challenge is "HELLO"; the secret password is "MISPS".

Want a chart with waypoints, pretty colors and stuff? Send us an e-mail at bmordecai@comcast.net.

